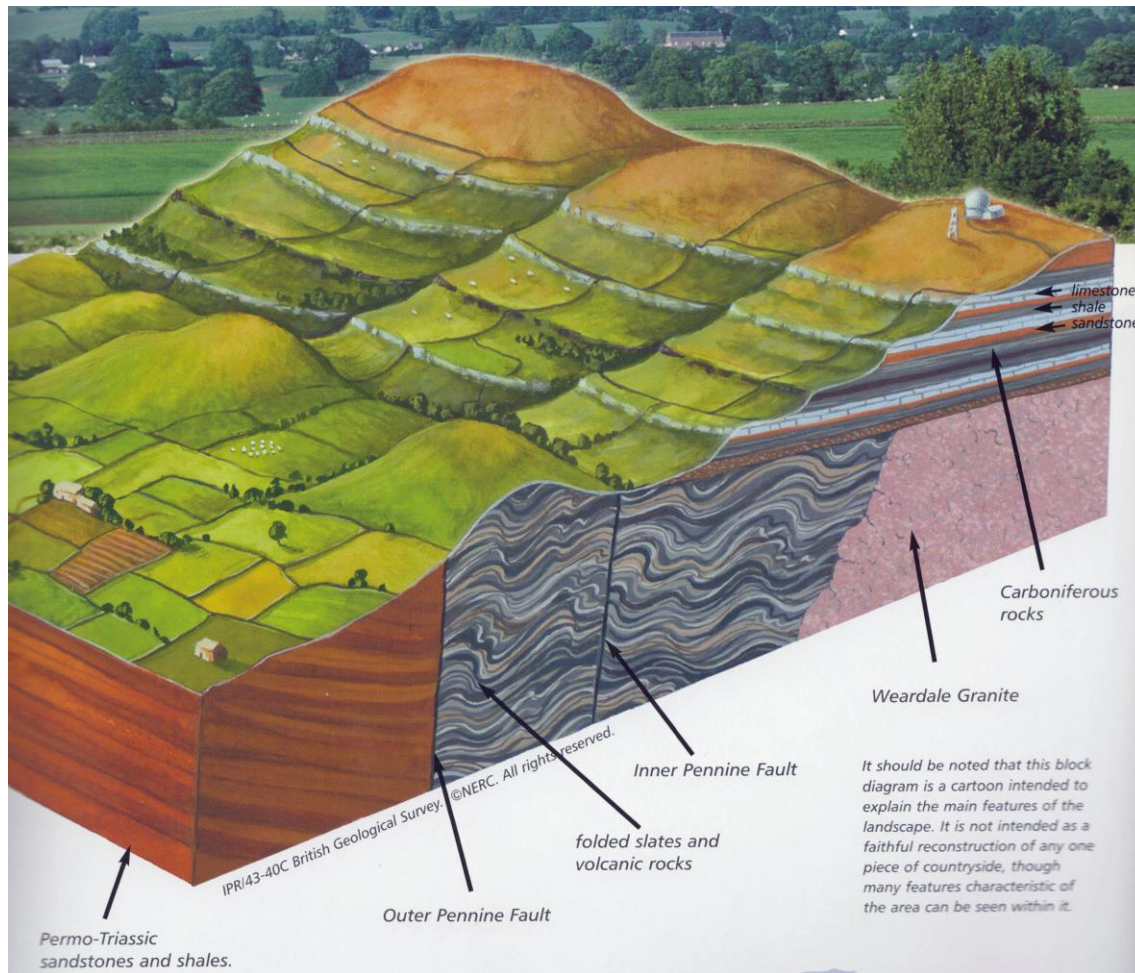
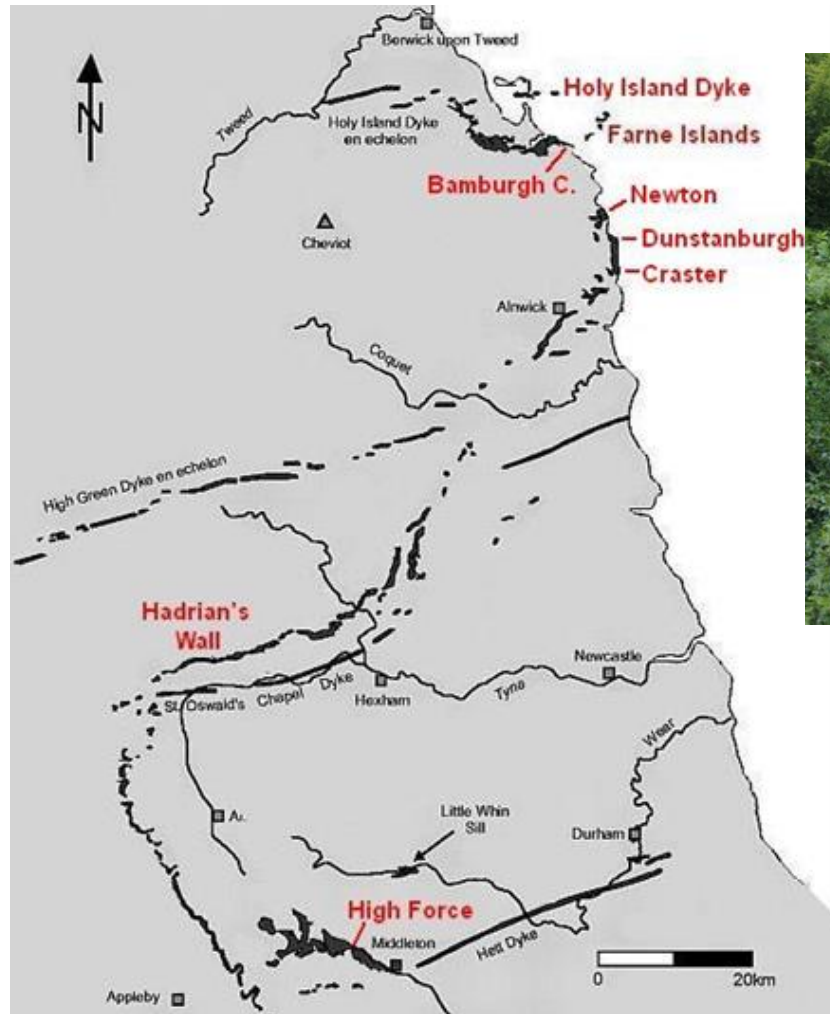


What Makes a Landscape

Bedrock: 'Stepped' Hillsides near Alston



Bedrock: Volcanism



Ice Age and Rivers

Aligned surface features
showing the direction of ice
flow

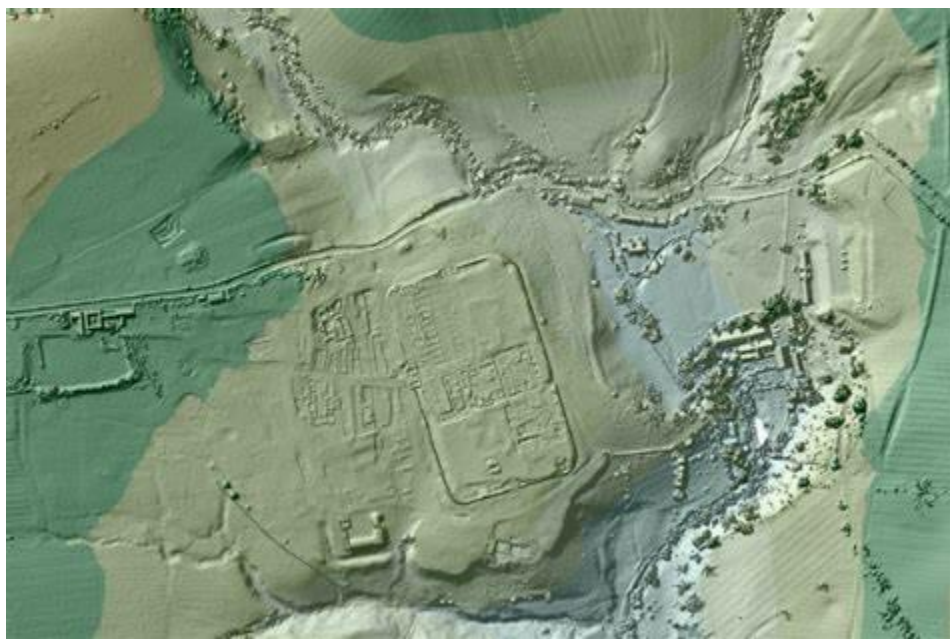
River systems



Climate and Soil



Ancient Settlements



Forest Clearance



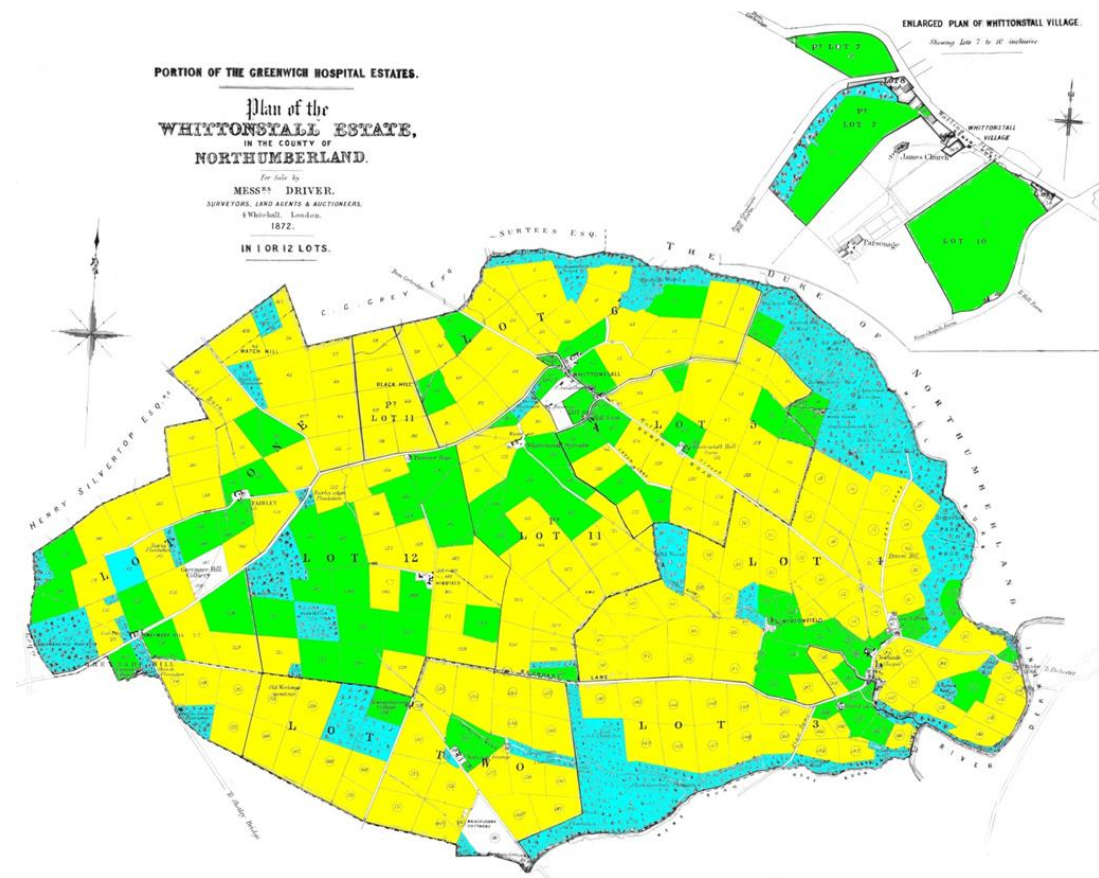
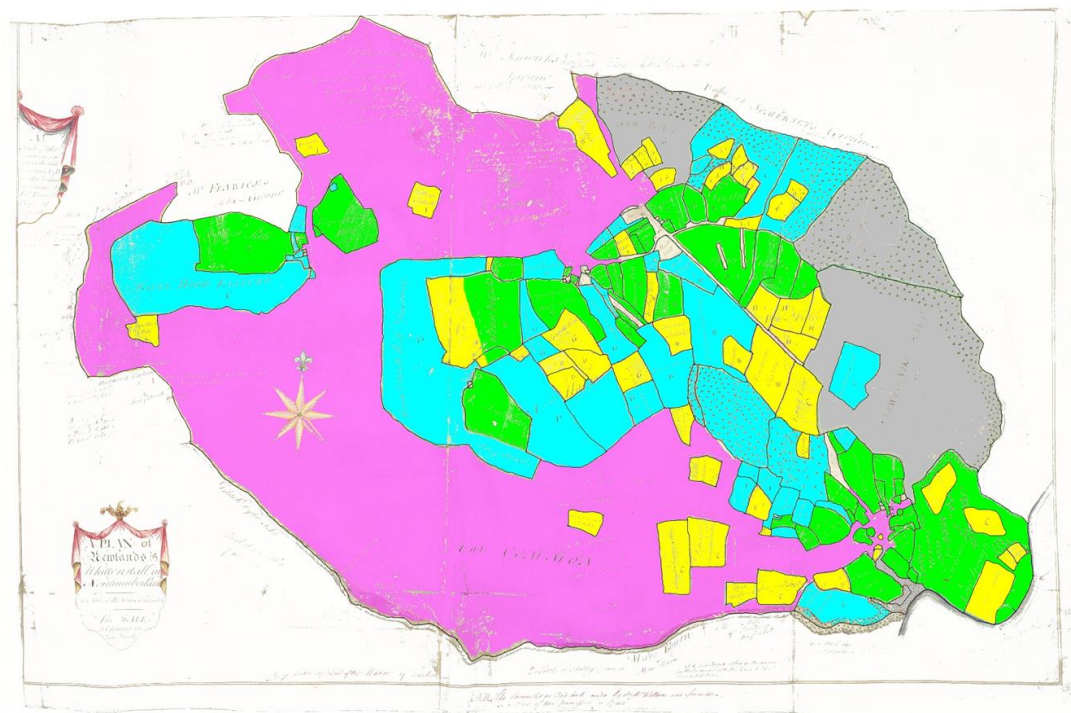
Pre-historic / Roman / Saxon:

Varied field size and
common land

Kings charter 1200 allowing
forest clearance:

Small irregular fields

Enclosure: 1736 / 1824



Industry: Lead Mining



Transport



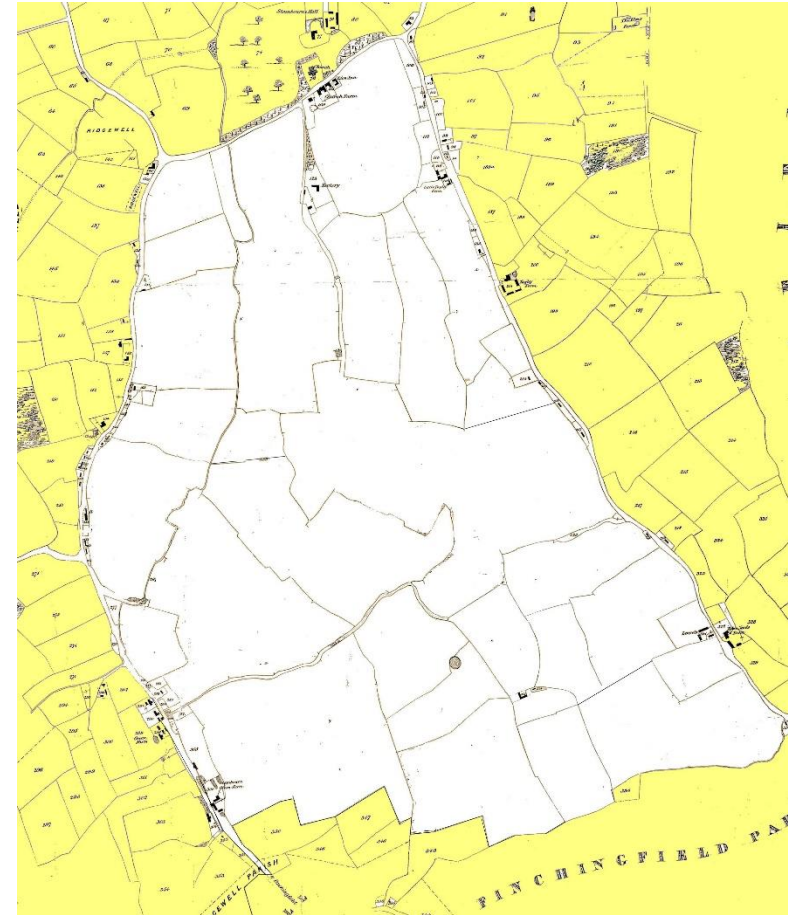
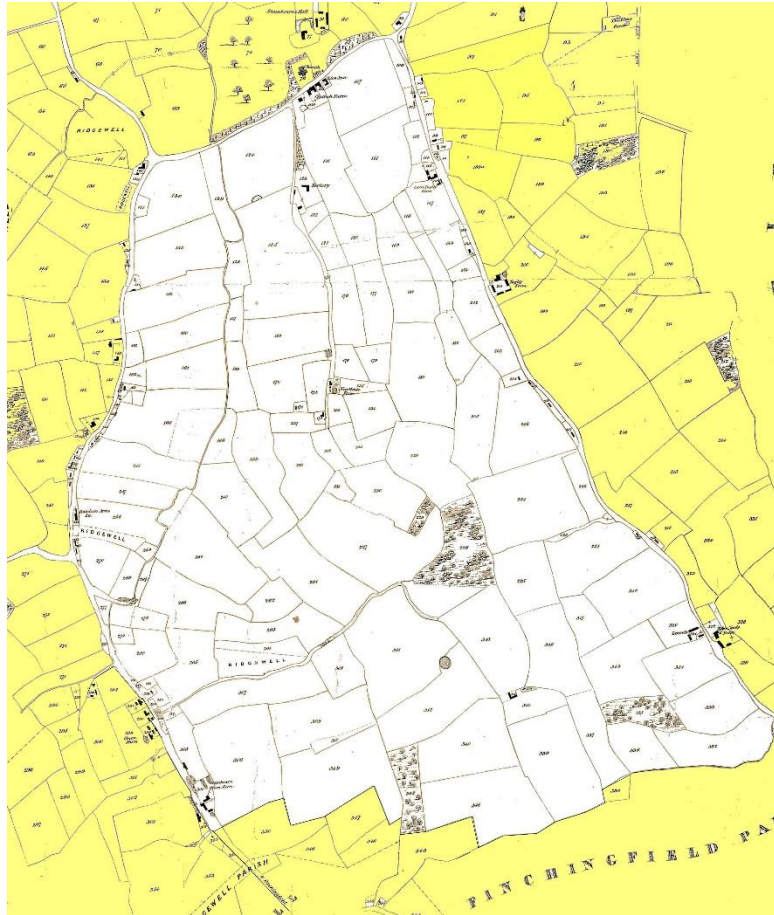
Agriculture & Abandoned Villages



Vegetation: Natural and Planted



Modern Agriculture: 1838 vs. 1992



People

